



REC# : 752635

RECORDED 5/8/2019 AT 1:09 PM BK# 2620 PG# 1677
Debra K. Lee, CLERK OF LARAMIE COUNTY, WY PAGE 1 OF 1

STATE OF WYOMING CORNER RECORD

(In compliance with the CORNER PERPETUATION AND FILING ACT, Wyoming Statutes, 1997 Section 33-29-140, et. seq., and the Rules and Regulations of the Board of Registrations for Professional Engineers and Professional Land Surveyors)

NORTH QUARTER CORNER SECTION 3, T. 18 N., R. 61 W., 6TH P.M., LARAMIE COUNTY, WYOMING

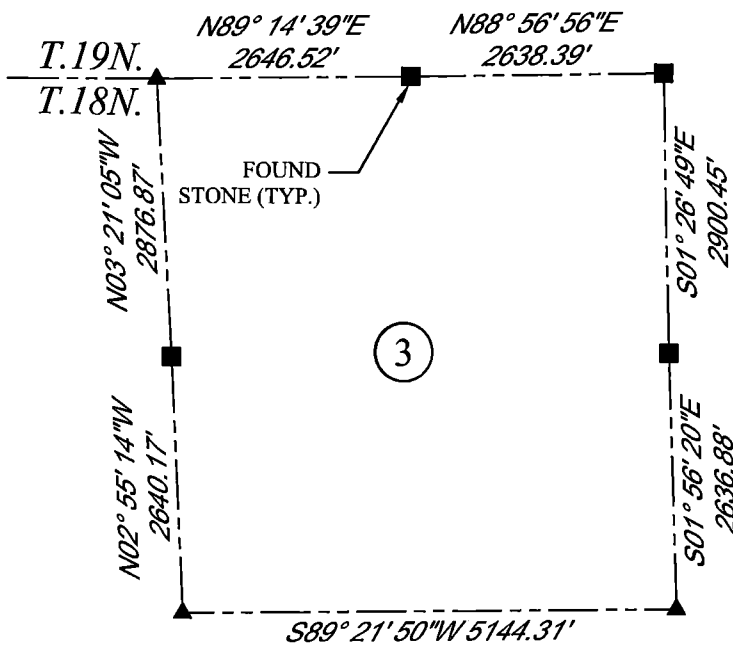
GLO: SET A SANDSTONE 18X12X3, 12 IN DEEP MARKED 1/4 ON NORTH FACE FOR 1/4 COR. SEC.

FOUND: FOUND LOOSE STONE MARKED WITH "1/4" IN FENCE LINE.

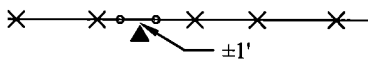
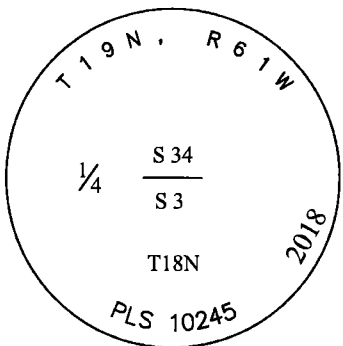
SET: SET A 3.25" ALUMINUM CAP ON #5 REBAR, 0.2' BELOW SURFACE MARKED AS SHOWN. CORNER IS SET ± 1' ON SOUTH SIDE OF E & W FENCE LINE.



SCALE: NONE
NORTH DETERMINED BY
G.P.S OBSERVATIONS



SET 3.25" ALUMINUM CAP, STAMPED AS SHOWN



LEGEND:

- FOUND BLM CAP
- FOUND USFS CAP
- FOUND STONE
- FOUND PRIVATE MONUMENT
- ◇ CALCULATED POSITION
- ▲ SET MONUMENT (LS10245)
- SECTION LINE

DATE OF FIELD WORK: 09/20/2018 OFFICE REFERENCE: MERIDEN

CROSS INDEX DIAGRAM

	1	2	3	4	5	6	7	8	9	10	11	12	13	14	15	16	17	18	19	20	21	22	23	24	25	
A																										
B																										
C			6																							
D				5																						
E					4																					
F						3																				
G			7																							
H				8																						
J					9																					
K						10																				
L			18																							
M				17																						
N					16																					
O						15																				
P			19																							
Q				20																						
R					21																					
S						22																				
T			30																							
U				29																						
V					28																					
W						27																				
X			31																							
Y				32																						
Z					33																					
	1	2	3	4	5	6	7	8	9	10	11	12	13	14	15	16	17	18	19	20	21	22	23	24	25	

WOOD
2615 AVIATION DRIVE
SHERIDAN, WY 82801
PH: 307-675-6400



THIS CORNER RECORD WAS
PREPARED BY ME OR UNDER
MY DIRECTION AND
SUPERVISION,
SEAL AND SIGNATURE

